

## Fall Newsletter



### IN THIS ISSUE

1. Immigration Partnership Updates
2. Immigration Partnership Member Profile: St Lawrence College
3. Local Spotlight: The Hamlet of Actons Corners
4. Immigration Research: At A Glance
5. Education & Employment: Training and Seminars

---

### WHAT'S NEW

## Immigration Partnership Updates

Nominations are now closed for the 6th Annual Leeds Grenville Immigrant Entrepreneur Award! Congratulations to all of our finalists!

David Shanahan of The North Grenville Times (North Grenville)  
Harsh and Kanisha Patel of Parkedale Pharmacy (Brockville)  
Maciej Brodowski of 1000 Islands B&B (Brockville)  
Paul Waenink of Marion's Honey (Rideau Lakes)  
Sam Rawas of Richard's Coffeehouse (Brockville)  
Samia O'Day of the Canada Music Academy (Brockville)



6TH ANNUAL LEEDS AND GRENVILLE  
**IMMIGRANT  
ENTREPRENEUR  
AWARD**

**Who is eligible?**

- \* Have been born outside of Canada
- \* Be an owner/operator of an active business in Leeds and Grenville
- \* Live in Leeds and Grenville
- \* Demonstrate characteristics of a successful entrepreneur

**How do I nominate?**

By submitting the name of the owner and their business by September 11, 2020.

**Where do I nominate?**

Social Media: @LGImmigration

Email: Lauren@eecentre.com

Phone: 613-498-2111 ex 261

In Person: Person: Employment + Education Centre (105 Stowger, Brockville)



The 6th Annual Leeds and Grenville Immigrant Entrepreneur Award poster

The winner of the Leeds Grenville Immigrant Entrepreneur Award will be presented at the Bridges to Better Business Conference hosted by the Leeds Grenville Small Business Enterprise Centre, and is happening October 29th, 2020 via Zoom! The conference will run from 9am to 12:30pm and is \$40. You can register for it [here](#). See the poster below for more details!

# Bridges To Better Business

## Leading Through Change

Via Zoom, Live from the Aquatarium



**Gaining results through Resilience.  
Overcoming adversity.  
Embracing Uncertainty.**

**Thursday, October 29<sup>th</sup>, 2020  
9:00 am to 12:00pm**

This will be an interactive and engaging online event live from the Aquatarium in Brockville, Ontario!

Featuring keynote speaker, Brodie Church.  
Networking \* Success Stories \* Awards.  
Entrepreneur of the Year Award  
Paul D Boivin Memorial Award  
Immigrant Entrepreneur of the Year Award



LEEDS GRENVILLE  
**Small Business  
Centre**  
3 Market St. West, Suite 3A  
Brockville, ON K6V 7L2 613-342-8772

*cost \$40 incl tax*

**Register at [www.lgsbec.com](http://www.lgsbec.com)**

**FedDev  
Ontario**

**Grenville  
CFDC**  
Entrepreneur Development Centres  
With the support of the Government of Canada  
through the Federal Economic Development  
Agency for Southern Ontario. **Canada**

**AQUARIUM**  
AT TALL SHEEPS LANDING

**ST. LAWRENCE · RIDEAU  
IMMIGRATION  
PARTNERSHIP**

Ontario

Bridges to Better Business Conference Poster

### COUNCIL MEMBER FEATURE

## St. Lawrence College



# St. Lawrence College

Each year, St. Lawrence College (SLC) typically welcomes 1,500+ international students from 55 countries. Our campuses in Kingston, Brockville, and Cornwall become their home away from home; international students find belonging in our welcoming College and local communities. SLC understands that higher education opens doors for international students. By pursuing a post-secondary education at SLC, international students are able to find jobs in Canada, learn about Canada's cultures, and build a network in their field of study, should they wish to stay in Canada to continue working after graduation.

Of course, things look a lot different this 2020-21 academic year due to the global COVID-19 pandemic. SLC is offering alternate program delivery for most programs. The only students on campus are those required to complete applied components such as labs and other hands-on simulations for their programs. SLC developed an [online orientation](#) to introduce new international students to our campus and allow them to

explore our campuses and services virtually.

Per [Immigration, Refugees and Citizenship Canada](#), amended travel restrictions will take effect on October 20, allowing international students to enter Canada if their designated learning institution (DLI) has an approved COVID-19 readiness plan in place. To continue to provide the high-quality education international students are looking for, SLC is working with the Government of Canada to become a DLI so our international students may continue their studies via alternate delivery in our communities.

---

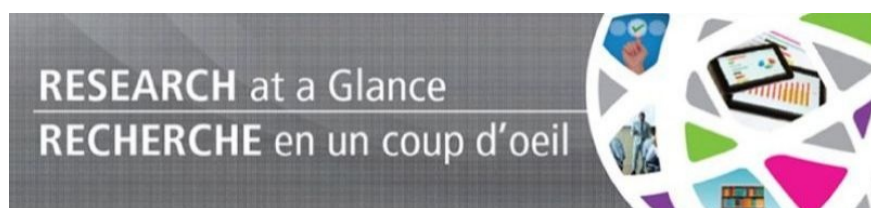
## Immigration Research

### At A Glance



Immigration, Refugees  
and Citizenship Canada

Immigration, Réfugiés  
et Citoyenneté Canada



IRCC shares immigration related studies and articles through the Research at a Glance email list. Research at a Glance is designed to inform the IRCC community and other interested parties about recently published reports and policy-relevant research from government, academia and non-governmental organizations.

Here is one such release:

- [Persistent Overqualification Among Immigrants and Non-Immigrants](#)

You can subscribe to Research at a Glance by emailing [research-recherche@cic.gc.ca](mailto:research-recherche@cic.gc.ca) (Note: articles arrive daily).

---

## LOCAL SPOTLIGHT

### The Hamlet of Actons Corners



#### DID YOU KNOW?

- The hamlet was originally called Bobstown.
- It was renamed after Robert Acton, after he and his family settled there from Ireland.
- It used to have a school, post office, to churches, and even a cheese factory.
- Photo credit: Sean Harris

---

## EDUCATION & EMPLOYMENT

### Training & Seminars

#### Bridges to Better Business Conference

October 29th, 9am to 12pm Via Zoom

Featuring keynote speaker Brodie Church, networking, success stories, and awards, including the announcement of the winner of the Leeds Grenville Immigrant Entrepreneur Award!



Fulford Academy  
Immetis - Services d'Immigration au Canada  
Kashif Riaz: Immigrant Representative  
KEYS Job Centre  
Leeds, Grenville and Lanark District Health Unit  
Leeds Grenville Small Business Enterprise Centre  
Ontario Ministry of Agriculture, Foods & Rural Affairs  
Refugees for Brockville Committee  
St. Lawrence College  
Town of Prescott  
TR Leger Immigrant Services/TR Leger Services aux Immigrants  
United Counties of Leeds and Grenville  
Upper Canada Leger Centre  
Volunteer Centre of St. Lawrence-Rideau

**Contact Us Today To Get Involved!**

Funded by:

Financé par :



Immigration, Refugees  
and Citizenship Canada

Immigration, Réfugiés  
et Citoyenneté Canada



*Copyright © St. Lawrence-Rideau Immigration Partnership, All rights reserved.*

**Our mailing address is:**

105 Strowger Blvd., Brockville, ON K6V 5V2  
P.O. Box 191  
Call us: 613-498-2111  
Email us: [diversity.matters@eecentre.com](mailto:diversity.matters@eecentre.com)

Want to change how you receive these emails?  
You can [update your preferences](#) or [unsubscribe from this list](#).



# Summer Newsletter



## IN THIS ISSUE


1. Immigration Partnership Updates
2. Immigration Partnership Member Profile: City of Brockville Economic Development
3. Local Spotlight: The Hamlet of New Wexford
4. Council Updates: COVID-19
5. Immigration Research: At A Glance
6. Education & Employment: Training and Seminars

---

## WHAT'S NEW

### Immigration Partnership Updates

Nominations are now open for the 6th Annual Leeds Grenville Immigrant Entrepreneur Award! Anyone can nominate an immigrant -owned/operated business that is in the Leeds and Grenville area. All that is needed is the name of the business and the immigrant. Nominations can be sent in via email, phone, or any of our social media. All nominations are due by September 11th, 2020.



# 6TH ANNUAL LEEDS AND GRENVILLE IMMIGRANT ENTREPRENEUR AWARD

## Who is eligible?

- \* Have been born outside of Canada
- \* Be an owner/operator of an active business in Leeds and Grenville
- \* Live in Leeds and Grenville
- \* Demonstrate characteristics of a successful entrepreneur

## How do I nominate?

By submitting the name of the owner and their business by September 11, 2020.

## Where do I nominate?

Social Media: @LGImmigration

Email: Lauren@eecentre.com

Phone: 613-498-2111 ex 261

In Person: Person: Employment + Education Centre (105 Stowger, Brockville)



The 6th Annual Leeds and Grenville Immigrant Entrepreneur Award poster

Due to the current pandemic and need for refocus, this year's We Are Neighbours campaign will be postponed. We'll be back with a new iteration of the campaign for spring of 2021, so stay tuned!





# POSTPONED UNTIL 2021

The St. Lawrence - Rideau Immigration Partnership Presents

## WE ARE NEIGHBOURS 2020 - Learning Together -

We are looking for Leeds and Grenville residents who have immigrated to the area or have traveled extensively and returned. We're curious about what you learned from your immigration or travel experiences. Share your stories with us!

**We Are Neighbours**  
Stories of our community



**CONTACT US FOR MORE INFORMATION**  
weareneighbours.wixsite.com/weareneighbours  
lauren@eecentre.com / 613-498-2111 / FB.com/LGImmigration

We Are Neighbours 2020 Campaign poster

### COUNCIL MEMBER FEATURE

## City of Brockville Economic Development



Our role in Economic Development is to support the growth of the local economy, we typically do this through working with existing employers (know as business retention) and attracting new investment.

We work with a range of economic development stakeholders including the Brockville & District Chamber of Commerce, Downtown Business Improvement Area, Employment and Education Centre, St. Lawrence College, St. Lawrence Corridor Economic Development Commission, United Counties of Leeds and Grenville, (and of course the St. Lawrence-Rideau Immigration Partnership), as well as others to develop and deliver programs that support businesses. Together we work on initiatives that support the business community, which recently has included the ['Pathways to Production'](#) program that responded to the manufacturing industry's needs by helping to create skilled employees to fill local job opportunities. The program assists with in-class and on-the-job training to get more skilled labour available to fill positions in local production facilities, with the program participants receiving paid job placements at the end of the program. We have also been working on supporting the tourism sector to grow the visitor economy with the Chamber of Commerce and have been developing a visitor wayfinding sign program to help drive visits to our attractions and create pride in our community.

Since the onset of the COVID-19 Pandemic, we have focused our efforts on communicating the relevant news to our business community and connecting businesses to resources such as federal funding programs, as well as celebrating the local business community that is adapting to the pandemic and supporting the community in new ways. As sectors are being allowed to reopen under the Provincial Framework, we are helping to clarify and simplify the guidelines that businesses need to follow and the changes that they need to follow and the changes that they need to make to their workplaces in order to operate safely. We have created a [Reopening Safely Guide for Business](#) in partnership with the DBIA and Chamber, that will be updated regularly, containing best practices, where to purchase necessary supplies and PPE locally, downloadable posters, and links to additional resources and information. We want to get our local businesses back up and running safely as soon as the emergency order is lifted, and we are working to support them in their efforts.

We have also partnered with the local Health Unit and area municipalities, chambers, and BIAs to create a standard poster for safe shopping. Look out for [this green poster](#) before entering stores throughout the region to see which safety precautions they are putting in place to protect customers and staff so that you can shop with confidence. We would like to remind everyone to shop locally and support local businesses during the pandemic, and after this crisis has passed. If we can keep local dollars circulating locally as much as possible that will help the local economy immensely.

**Rob Nolan**

*Director of Economic and Development Services*

(613) 342-8772

[rnolan@brockville.com](mailto:rnolan@brockville.com)

**Kendra Lorimer**

*Economic Development Coordinator*

(613) 342-8772

[klorimer@brockville.com](mailto:klorimer@brockville.com)

---

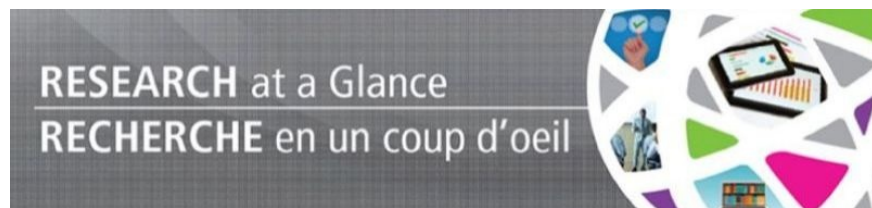
**Immigration Research**

**At A Glance**



**Immigration, Refugees  
and Citizenship Canada**

**Immigration, Réfugiés  
et Citoyenneté Canada**



IRCC shares immigration related studies and articles through the Research at a Glance email list. Research at a Glance is designed to inform the IRCC community and other interested parties about recently published reports and policy-relevant research from government, academia and non-governmental organizations.

Here is one such release:

- [Annual Demographic Estimates: Subprovincial areas | Estimations démographiques annuelles : régions infraprovinciales](#)

You can subscribe to Research at a Glance by emailing [research-recherche@cic.gc.ca](mailto:research-recherche@cic.gc.ca) (Note: articles arrive daily).

---

**LOCAL SPOTLIGHT**

**The Hamlet of New Wexford**

**DID YOU KNOW?**

- The hamlet was originally commissioned to be



- plotted out by three spinster sisters in 1860.
- The first successful business in the area was a slaughterhouse.
- It used to have an overpass, nicknamed The Subway, that caused many trucks to shear off their roofs.
- Photo credit: RoeyMills

---

## COUNCIL UPDATES

### COVID-19

Find below updates from our Immigration Partnership Council regarding their services, resources, and information about what is happening during these difficult times.

#### **Leeds Grenville Small Business Enterprise Centre:**

Although Wendy and Jeanette are not in the office and are not seeing clients in person they are using technology to stay in touch with clients. They are doing business consults via phone, zoom or teams. They are also conducting a weekly zoom call featuring one of their experts. Information for this can be found on their [website](#).

Summer Company will be continuing this year with 6 participants. The Women's Entrepreneurship Program and The Starter Co Plus program will have fall intakes. They anticipate the training for these programs will be virtual.

#### **Service Canada:**

Check out the links below for more information and resources!

*Canadians are encouraged to visit our website daily to stay informed on the support available to Canadians and businesses.*

<https://www.canada.ca/en/department-finance/economic-response-plan.html>

*Questions and Answers on the Canada Emergency Response Benefit (CERB) and Employment Insurance Benefits (EIB):*

<https://www.canada.ca/en/services/benefits/ei/cerb-application/questions.html>

*Canadians call also sign-up to receive updates on COVID-19 here:*

<https://www.canada.ca/en/managed-web-service/get-updates-covid-19.html>

*Service Canada-Online Service Request:*

<https://sr-ds.powerappsportals.com/en/service/>

#### **United Counties of Leeds and Grenville:**

Check out their website [here](#) for the latest updates, news, and information from the Counties with regards to resource, financial aid, businesses reopening and local PPE suppliers.

---

## EDUCATION & EMPLOYMENT

### Training & Seminars



#### **Employment + Education Centre**

The Employment + Education Centre in Brockville is offering virtual coaching for job seekers, in addition to in-person coaching by appointment..

Check out their website for more information [here](#).



#### **Starter Company Plus**

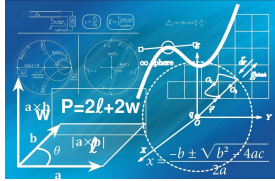
Online, August 26th, 3-4pm.

Starter Company Plus includes:

- one-on-one guidance from a Small Business Enterprise Centre advisor
- access to a business plan boot camp and coaching/training from professional consultants and coaches

- funding of up to \$5,000
- training and mentorship that will better position you to be more successful and profitable in your business and to obtain more traditional financing

Want to know more? Check out the Leeds Grenville Small Business Enterprise Centre [here](#).



### **Coursera**

**Offering online courses from top universities and companies, including many free ones!**

Upgrade your skills, follow your interests, and earn certificates/degrees from home!

For more info, click [here!](#)



### **Edx**

**Offers free courses online that include business, language, and IT related among others.**

Get courses from top universities worldwide to help upgrade your skills and make you more employable!

For more info, click [here!](#)

## **IMMIGRATION PARTNERSHIP COUNCIL**

### **Member Organizations**

These are the organizations that provide leadership to the St. Lawrence-Rideau Immigration Partnership.

- Brockville & Area YMCA
- Brockville & District Multicultural Council
- Brockville Police Service
- Chinese & Canadian Heritage Cultural Association
- City of Brockville Economic Development
- CSE Consulting
- Employment + Education Centre
- Every Kid in Our Communities
- Francophone Immigration Support Network of East Ontario
- Frank Onasanya: Immigrant Representative
- Fulford Academy
- Immetis - Services d'Immigration au Canada
- Kashif Riaz: Immigrant Representative
- KEYS Job Centre
- Leeds, Grenville and Lanark District Health Unit
- Leeds Grenville Small Business Enterprise Centre
- Ontario Ministry of Agriculture, Foods & Rural Affairs
- Refugees for Brockville Committee
- St. Lawrence College
- 1000 Island Workforce Development Board
- Town of Prescott
- TR Leger Immigrant Services/TR Leger Services aux Immigrants
- United Counties of Leeds and Grenville
- Upper Canada Leger Centre
- Volunteer Centre of St. Lawrence-Rideau

**Contact Us Today To Get Involved!**

Funded by:

Financé par :



Immigration, Refugees  
and Citizenship Canada

Immigration, Réfugiés  
et Citoyenneté Canada



---

*Copyright © St. Lawrence-Rideau Immigration Partnership, All rights reserved.*

**Our mailing address is:**

105 Strowger Blvd., Brockville, ON K6V 5V2

P.O. Box 191

Call us: 613-498-2111

Email us: [diversity.matters@eecentre.com](mailto:diversity.matters@eecentre.com)

Want to change how you receive these emails?

You can [update your preferences](#) or [unsubscribe from this list](#).

# Winter Newsletter



## IN THIS ISSUE

1. Immigration Partnership Updates
2. Immigration Partnership Member Profile: The Employment + Education Centre
3. Local Spotlight: The Village of Lombardy
4. Immigration Research: At A Glance
5. Council Member Updates
6. Education & Employment: Training and Seminars

---

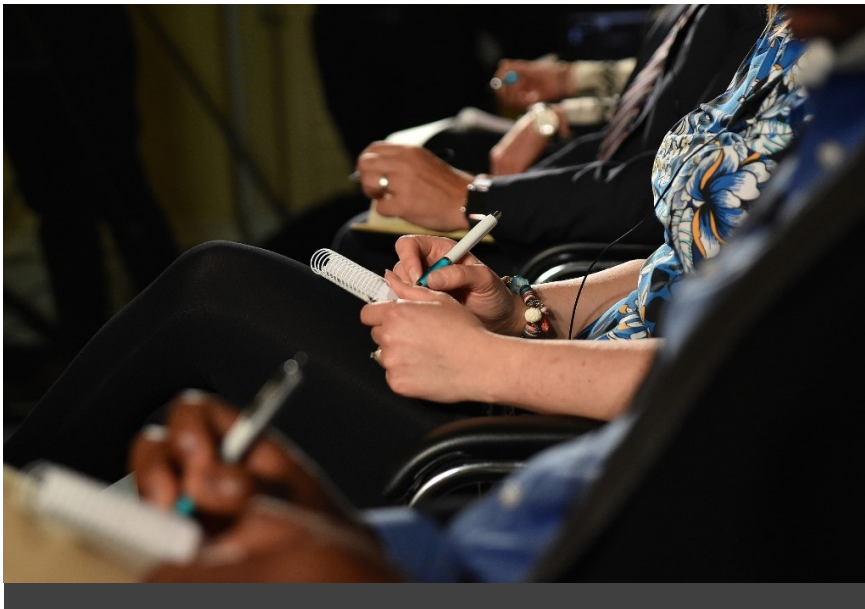
## WHAT'S NEW

### Immigration Partnership Updates

The St. Lawrence-Rideau Immigration Partnership is currently finishing up community consultations with local newcomers. The information gathered about how immigrants find the community, what supports are/aren't here, what they like/don't like about the region, and what they would like to see changed/improved will be shared once completed. This information will also be used to update the Leeds and Grenville Immigration strategy which will be done during 2021.







---

## COUNCIL MEMBER FEATURE

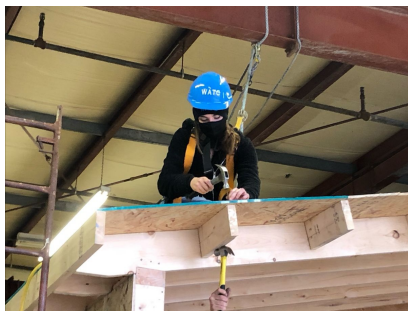
# The Employment + Education Centre



We Are The Change, an employment preparation program, combines interactive workshops and virtual reality with practical, on-the-job training to equip our youth participants with the skills and experiences needed to build tiny homes. Youth will obtain multiple certifications for trade specific employment that will be applied through the experiential learning experience of building a tiny home.

We are engaging construction companies, electrical, plumbing and welding businesses and other contractors needed to teach, show, supervise and mentor our youth regarding all aspects of the tiny home build. Woven throughout the program are life skills, soft skills and employability skills development sessions to build and hone the skills that our youth are needing for long-term life success. We include literacy and basic skills, essential skills training/education in these workshops, with the intention of working our youth towards high school graduation. Individualized need for mentorship in various aspects of each youth's life will be assessed and our youth will be matched with community mentors. Our youth will engage their community through a speaking tour to share their experience and growth as a result of the program.

Our, We Are The Change Coordinator, is working with decision makers in the municipalities in Leeds and Grenville to change their tiny houses policies/ By-Laws which will result in the ability for people to access this type of affordable housing option. Simultaneously, we are working with our Community Housing services and Habitat for Humanity to build these tiny homes into their existing housing support continuum, ensuring that affordable housing options are offered to all people. Employers and businesses in each community will be positively impacted through access to skilled labour and business growth.



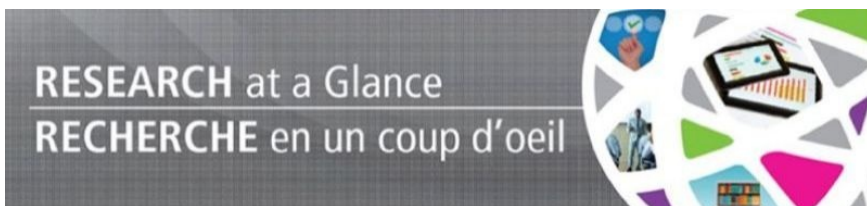
---

## Immigration Research At A Glance



Immigration, Refugees  
and Citizenship Canada

Immigration, Réfugiés  
et Citoyenneté Canada



IRCC shares immigration related studies and articles through the Research at a Glance email list. Research at a Glance is designed to inform the IRCC community and other interested parties about recently published reports and policy-relevant research from government, academia and non-governmental organizations.

Here is one such release:

- [Persistent Overqualification Among Immigrants and Non-Immigrants](#)

You can subscribe to Research at a Glance by emailing [research-recherche@cic.gc.ca](mailto:research-recherche@cic.gc.ca) (Note: articles arrive daily).

---

## LOCAL SPOTLIGHT

### The Village of Lombardy

#### DID YOU KNOW?

- The village is supposedly named after a French soldier, Francis Lombard, who settled there.
- It has been called by many names, including



Landon's Mills and South Elmsley.

- Due to it being near Otter Creek, a large number of mills were built in the area.
- Photo credit: P199

---

## WHAT'S HAPPENING

### Council Member Updates



#### Ask the Experts: Ontario Together Recovery Fund

- Have you experienced a loss of revenue?
- Are you struggling with what to do next?
- Are you frustrated with all the challenges and roadblocks you are facing with operating your business right now?
- Would you like some help with these topics: Accounting, Legal, Social Media, Human Resources, Business Planning and Coaching, Marketing?

As part of the Small Business Ontario Network, Leeds Grenville Small Business Centre and Small Business Advisory Centre Smiths Falls/ Lanark County has been granted a special fund that is to be used to assist local small business owners recover from the effects of COVID-19.

This funding will be used for small business owners to access one on one time with an expert with no charge to the client.

You are not alone and there is more support available to you to get you moving forward. Your local Small Business Centre can help.

To learn more about how we can help you contact your local Centre.

Smiths Falls/Lanark/Upper Leeds is Cindy James [cjames@smallbizcentre.ca](mailto:cjames@smallbizcentre.ca) 613-283-7002 x108

Lower Leeds and Grenville County is Carol Hardy [carol@lgsmallbusiness.com](mailto:carol@lgsmallbusiness.com) 613-342-0400 x 4432.



Check out the Local Labour Market Report Planning (LLMP) Report, which is a comprehensive document found on the Eastern Workforce Innovation Board's website. This document can be used as a standalone report on the local labour market in the 1000 Islands Region. It is a compilation of facts and figures together with community input. It outlines labour market trends and potential challenges in workforce development. It also provides action plans that outlines activities and projects that community partners are undertaking to address some of the labour market challenges.

Starting on page 42 is the section on immigration in the area. Immigrants only make up 7.2% of the population of Leeds and Grenville, far below the rate of 29.1% of all of Ontario, and even the 12% of Frontenac.

**Check it out here:** <http://www.workforcedev.ca/index.php/en/local-labour-market-planning-reports/2020-reports>

# Training & Seminars



## Student Job Search + Interviewing

April 14th, 3pm In-Person or Online

Employment + Education Centre, Brockville

Join us in our Resource Centre to learn strategic job searching, interviewing tips, and resource handouts including an interview simulator and tips and tricks!

For more info or to register, click [here!](#)



## Smart Serve and WHMIS Training

By Request

Get your Smart Serve and/or WHMIS Training through CSE Consulting! Available by request, and free for registered clients!

Want to know more or register? Check out their website [here.](#)



## Employment + Education Centre

The Employment + Education Centre in Brockville is offering virtual coaching for job seekers, in addition to in-person coaching by appointment..

Check out their website for more information [here.](#)



## Coursera

Offering online courses from top universities and companies, including many free ones!

Upgrade your skills, follow your interests, and earn certificates/degrees from home!

For more info, click [here!](#)



## Edx

Offers free courses online that include business, language, and IT related among others.

Get courses from top universities worldwide to help upgrade your skills and make you more employable!

For more info, click [here!](#)

---

## IMMIGRATION PARTNERSHIP COUNCIL Member Organizations

These are the organizations that provide leadership to the St. Lawrence-Rideau Immigration Partnership.

- Brockville & Area YMCA
- Brockville & District Multicultural Council
- Brockville Police Service
- Chinese & Canadian Heritage Cultural Association
- City of Brockville Economic Development
- CSE Consulting
- Eastern Workforce Innovation Board
- Employment + Education Centre
- Every Kid in Our Communities

Francophone Immigration Support Network of East Ontario

Frank Onasanya: Immigrant Representative

Fulford Academy

Immetis - Services d'Immigration au Canada

Kashif Riaz: Immigrant Representative

KEYS Job Centre

Leeds, Grenville and Lanark District Health Unit

Leeds Grenville Small Business Enterprise Centre

Ontario Ministry of Agriculture, Foods & Rural Affairs

Refugees for Brockville Committee

St. Lawrence College

Town of Prescott

TR Leger Immigrant Services/TR Leger Services aux Immigrants

United Counties of Leeds and Grenville

Upper Canada Leger Centre

Volunteer Centre of St. Lawrence-Rideau

**Contact Us Today To Get Involved!**

Funded by:

Financé par :



Immigration, Refugees  
and Citizenship Canada

Immigration, Réfugiés  
et Citoyenneté Canada



Copyright © St. Lawrence-Rideau Immigration Partnership. All rights reserved.

**Our mailing address is:**

105 Strowger Blvd., Brockville, ON K6V 5V2

P.O. Box 191

Call us: 613-498-2111

Email us: [diversity.matters@eecentre.com](mailto:diversity.matters@eecentre.com)

Want to change how you receive these emails?

You can [update your preferences](#) or [unsubscribe from this list](#).